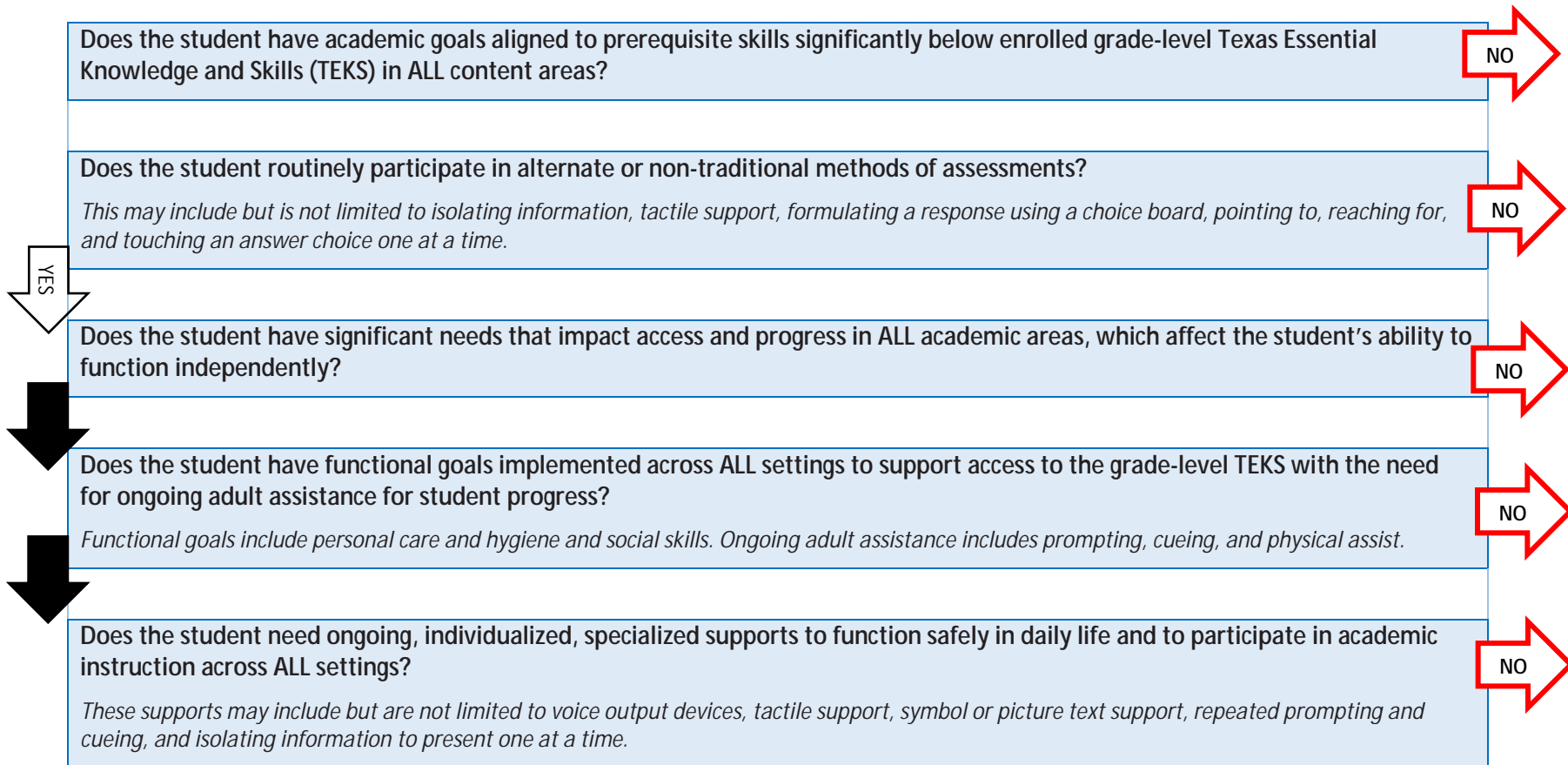


# Companion Document

## STAAR Alternate 2 Participation Requirements



*This document should be used in conjunction with the State of Texas Assessments of Academic Readiness (STAAR®) Alternate 2 Participation Requirements. Admission, review, and dismissal (ARD) committees are responsible for determining state assessment eligibility by reviewing the student's unique educational and adaptive needs. Sources of evidence for a student's eligibility for STAAR Alternate 2 are on page 2 of this document.*



The student is **NOT** eligible for STAAR Alternate 2 and must be assessed with STAAR. Members of the ARD committee should be trained on STAAR accommodations to make informed assessment decisions.

## Companion Document

Does the student require ongoing adult assistance to initiate, perform, and complete self-care routines?

*Ongoing adult assistance includes prompting, cueing, and physical assist. The student's requirement of adult assistance is NOT due to a physical disability alone but rather to the student's significant cognitive disability. Self-care routines include, but are not limited to, feeding, dressing, toileting, and personal hygiene. The ARD committee should consider all areas of self-care to determine if the student requires adult assistance because he or she has not mastered self-care routines.*

b e c 0 5 2 4 m

**This student is eligible to participate in STAAR Alternate 2 upon completion of the state required ARD assessment decision-making processes, including marking all the assurances on the student's STAAR Alternate 2 participation requirements document.**