



2023 Accountability Underlying Data Statewide Summary

November 16, 2023

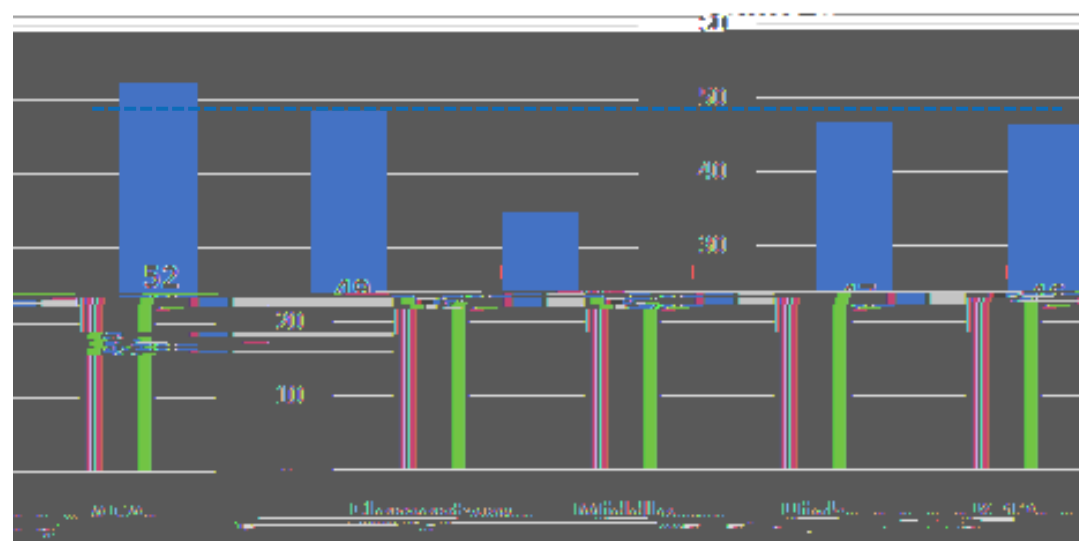
These data do not include ~~TEA~~ ratings or scale scores (i.e., information about cut scores). They only include raw scores of the underlying indicators from students in the accountability subset.

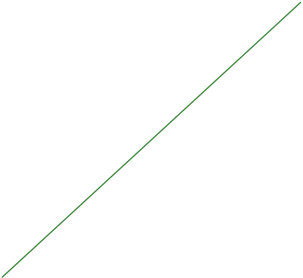
2023 Accountability Data Timeline



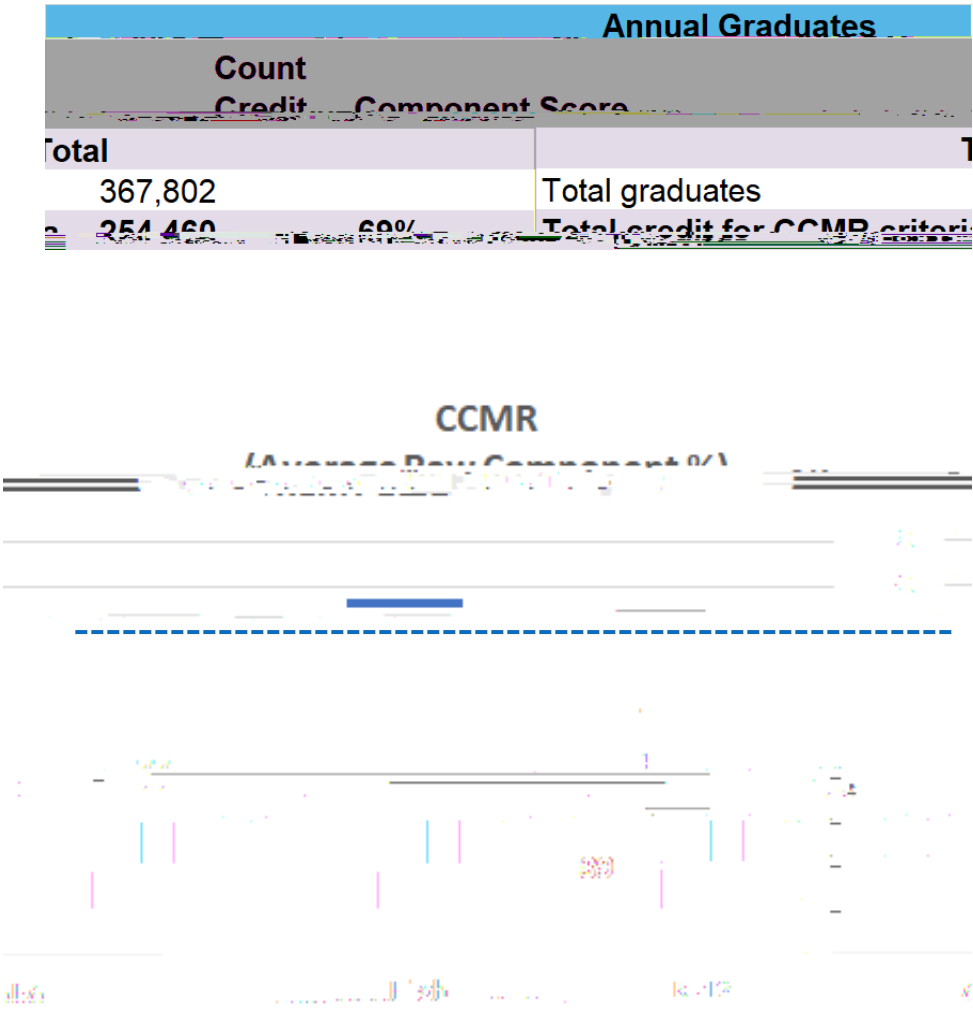
STAAR Proficiency

Average Raw Component %





Statewide raw CCMR score data

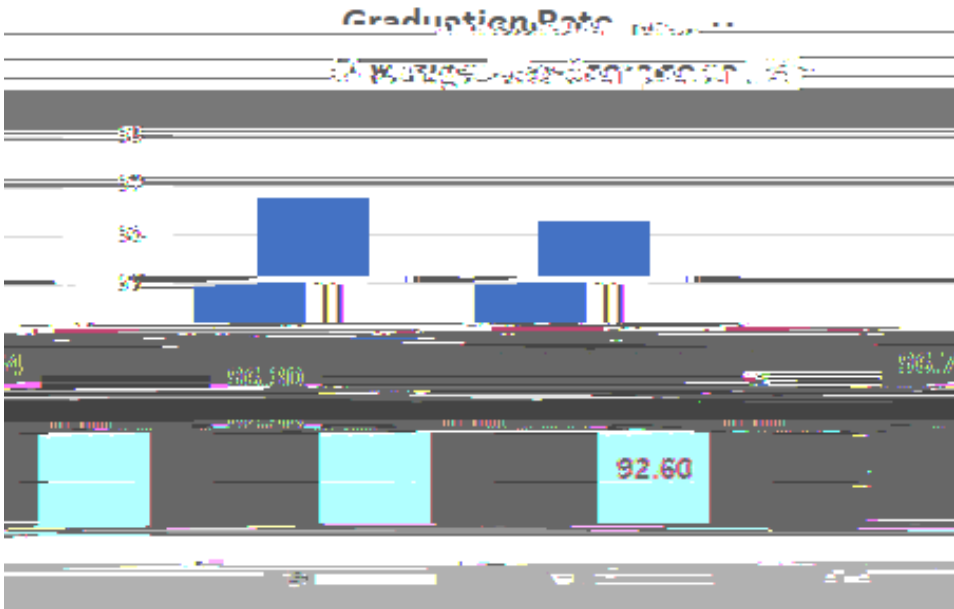


Industry-Based Certifications (IBC)		
Earned an IBC	27%	E
Earned at least one sunsetted IBC and did not meet any other CCMR criteria	5%	E
Earned a level I or level II certificate in any workforce	1%	
Completed IEP and Workforce Readiness	Graduate with Com	
Received production grade of 04, 05, 54		
Military		
Enlisted in the U.S. Armed Forces	N/A	Enlist

These data do not include AFET/JTJ/C2Tfe5ti>Tf S (e).s Tores (i.e.,>t5ti>Tf inftaboA



State Graduation Rate	
4-Year Graduation Rate (Gr 9-12): Class of 2022	
% Graduated	89.70%
[Additional data rows are present but illegible due to image quality]	



These data do not include A ratings or scale scores (i.e., information about cut scores). They only include raw scores of the underlying indicators from students in the accountability subset.